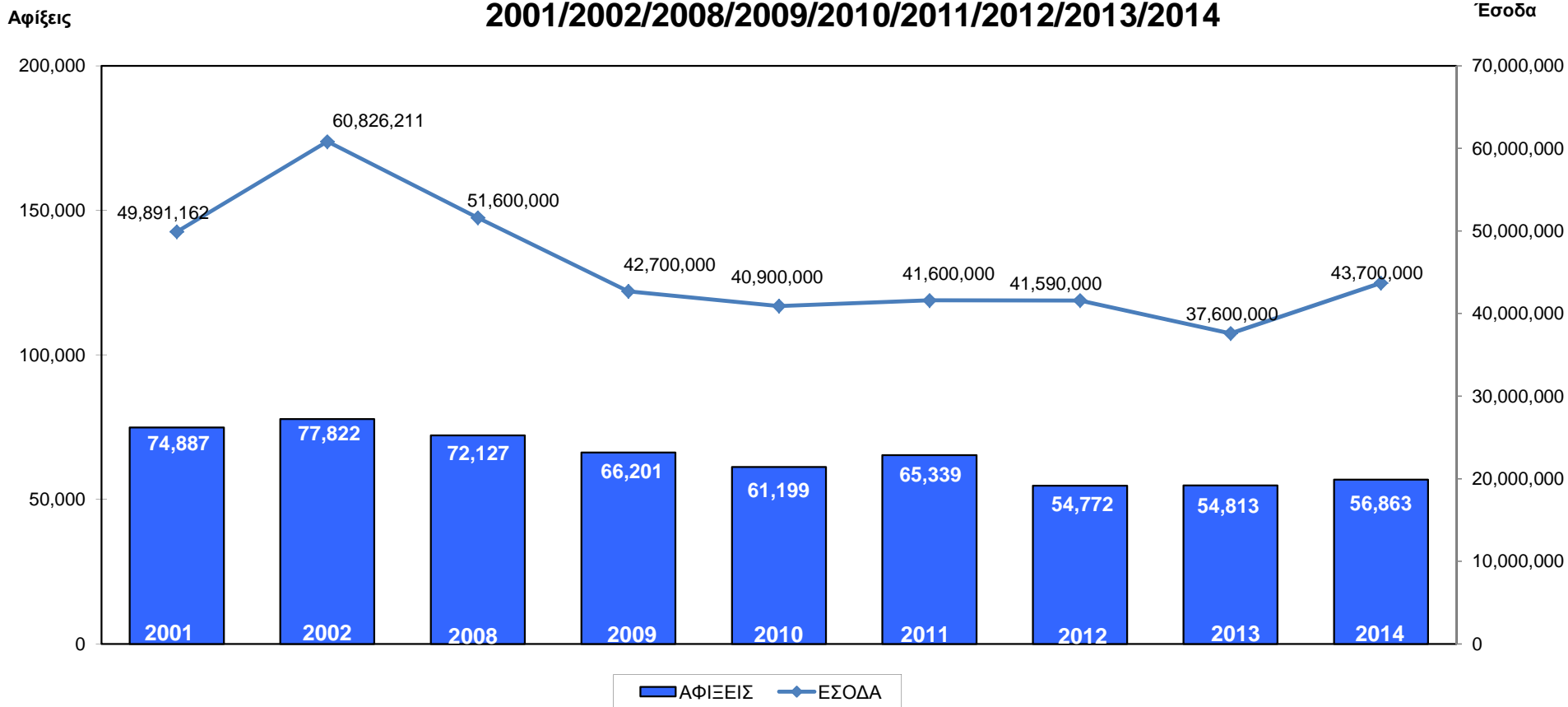


ARRIVALS																
	2001	2002	2008	2009	2010	2011	2012	2013	2014	% 14/13	% 13/12	% 12/11	% 11/10	% 10/09	% 09/08	% 14/01
Jan	64,214	54,067	50,658	47,066	45,952	44,442	47,610	42,286	40,675	-3.81	-11.18	7.13	-3.29	-2.37	-7.09	-36.66
Feb	83,569	71,950	70,140	56,626	55,250	62,294	55,420	42,327	45,227	6.85	-23.63	-11.03	12.75	-2.43	-19.27	-45.88
Mar	137,578	138,625	108,164	90,434	103,803	98,964	94,300	92,620	77,533	-16.29	-1.78	-4.71	-4.66	14.78	-16.39	-43.64
Apr	237,229	180,481	182,091	181,395	139,658	199,762	189,648	162,439	180,998	11.43	-14.35	-5.06	43.04	-23.01	-0.38	-23.70
May	324,901	279,070	271,559	246,546	258,014	267,487	276,781	276,244	293,181	6.13	-0.19	3.47	3.67	4.65	-9.21	-9.76
Jun	322,835	293,192	307,237	260,931	275,280	300,817	329,977	308,219	342,221	11.03	-6.59	9.69	9.28	5.50	-15.07	6.00
Jul	373,385	327,404	342,554	304,126	306,106	359,104	371,453	361,442	381,955	5.68	-2.70	3.44	17.31	0.65	-11.22	2.30
Aug	371,536	301,724	328,100	291,583	304,264	337,013	363,573	352,215	373,086	5.93	-3.12	7.88	10.76	4.35	-11.13	0.42
Sep	329,400	306,731	305,348	276,178	289,126	304,260	335,352	357,653	316,602	-11.48	6.65	10.22	5.23	4.69	-9.55	-3.89
Oct	269,744	275,840	267,866	230,431	241,698	259,863	261,997	273,587	251,453	-8.09	4.42	0.82	7.52	4.89	-13.98	-6.78
Nov	107,454	111,327	97,900	89,670	92,643	92,878	84,020	81,542	81,437	-0.13	-2.95	-9.54	0.25	3.32	-8.41	-24.21
Dec	74,887	77,822	72,127	66,201	61,199	65,339	54,772	54,813	56,863	3.74	0.07	-16.17	6.76	-7.56	-8.22	-24.07
TOTAL	2,696,732	2,418,233	2,403,744	2,141,187	2,172,993	2,392,223	2,464,903	2,405,387	2,441,231	1.49	-2.41	3.04	10.09	1.49	-10.92	-9.47
REVENUE (Euro)																
	2001	2002	2008	2009	2010	2011	2012	2013	2014	% 14/13	% 13/12	% 12/11	% 11/10	% 10/09	% 09/08	% 14/01
Jan	42,614,013	36,872,803	35,300,000	31,200,000	29,700,000	29,800,000	30,000,000	30,900,000	30,700,000	-0.65	3.00	0.67	0.34	-4.81	-11.61	-27.96
Feb	49,782,485	49,327,484	40,600,000	36,300,000	33,900,000	36,900,000	32,300,000	28,300,000	31,300,000	10.60	-12.38	-12.47	8.85	-6.61	-10.59	-37.13
Mar	84,977,804	100,978,345	67,300,000	57,400,000	65,600,000	66,400,000	62,500,000	66,000,000	56,500,000	-14.39	5.60	-5.87	1.22	14.29	-14.71	-33.51
Apr	153,544,707	131,621,659	107,800,000	107,400,000	89,000,000	136,700,000	114,600,000	110,400,000	132,900,000	20.38	-3.66	-16.17	53.60	-17.13	-0.37	-13.45
May	237,649,574	204,254,500	191,300,000	158,100,000	164,800,000	187,100,000	214,300,000	202,100,000	224,100,000	10.89	-5.69	14.54	13.53	4.24	-17.35	-5.70
Jun	268,862,405	238,040,133	229,600,000	175,400,000	195,300,000	220,000,000	254,500,000	259,800,000	303,200,000	16.71	2.08	15.68	12.65	11.35	-23.61	12.77
Jul	328,025,550	274,549,136	272,900,000	232,500,000	231,100,000	274,400,000	301,500,000	338,600,000	321,200,000	-5.14	12.31	9.88	18.74	-0.60	-14.80	-2.08
Aug	350,195,256	262,722,392	278,000,000	234,800,000	241,100,000	267,000,000	312,100,000	349,500,000	324,300,000	-7.21	11.98	16.89	10.74	2.68	-15.54	-7.39
Sep	301,226,434	268,933,867	247,400,000	200,200,000	220,500,000	235,800,000	289,900,000	353,400,000	273,400,000	-22.64	21.90	22.94	6.94	10.14	-19.08	-9.24
Oct	222,459,908	218,700,984	198,600,000	156,300,000	175,500,000	188,800,000	211,500,000	246,600,000	217,100,000	-11.96	16.60	12.02	7.58	12.28	-21.30	-2.41
Nov	83,379,750	87,822,114	72,400,000	61,000,000	62,400,000	64,800,000	62,800,000	59,200,000	65,000,000	9.80	-5.73	-3.09	3.85	2.30	-15.75	-22.04
Dec	49,891,162	60,826,211	51,600,000	42,700,000	40,900,000	41,600,000	41,590,000	37,600,000	43,700,000	16.22	-9.59	-0.02	1.71	-4.22	-17.25	-12.41
TOTAL	2,172,609,048	1,934,649,629	1,792,800,000	1,493,300,000	1,549,800,000	1,749,300,000	1,927,590,000	2,082,400,000	2,023,400,000	-2.83	8.03	10.19	12.87	3.78	-16.71	-6.87

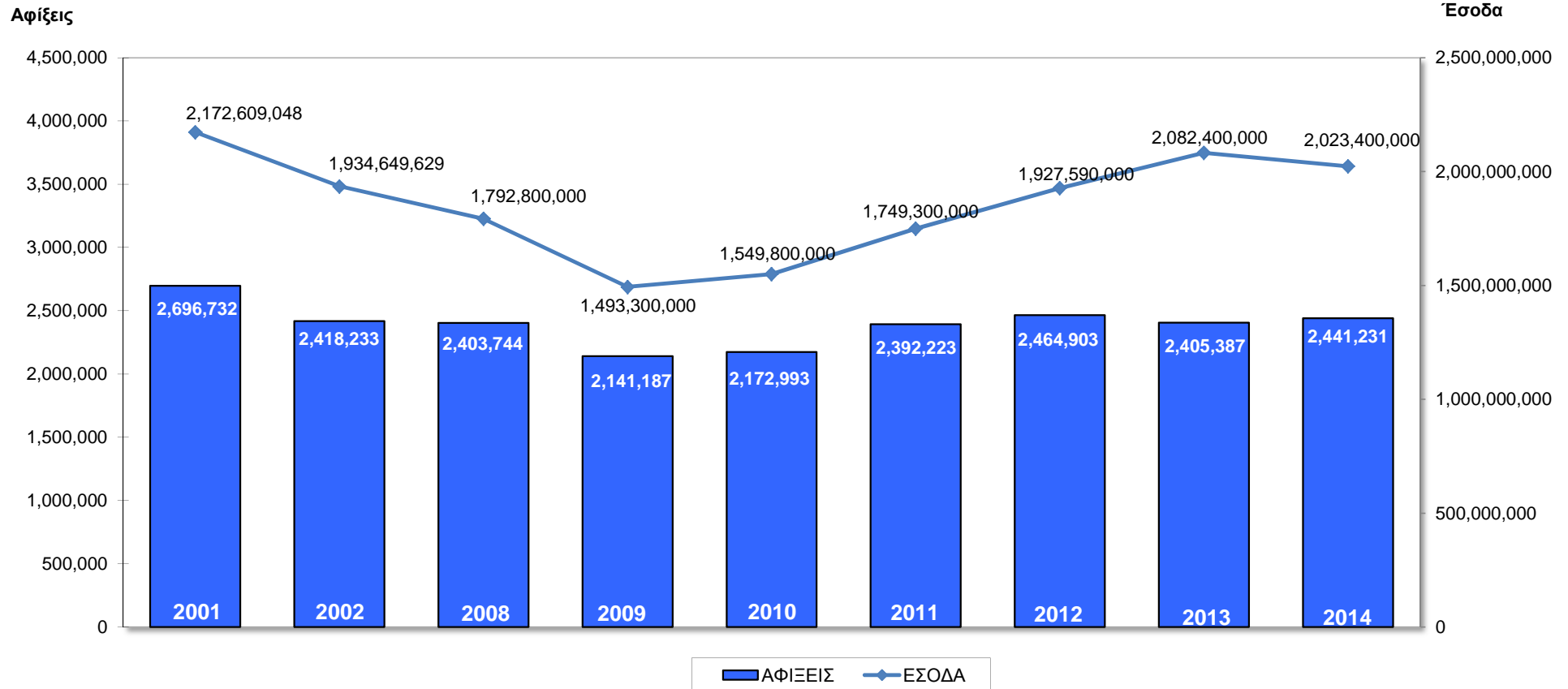
ΣΥΓΚΡΙΤΙΚΟΣ ΠΙΝΑΚΑΣ ΑΦΙΞΕΩΝ ΚΑΙ ΕΣΟΔΩΝ ΔΕΚΕΜΒΡΙΟΥ 2001/2002/2008/2009/2010/2011/2012/2013/2014



ARRIVALS																
	2001	2002	2008	2009	2010	2011	2012	2013	2014	% 14/13	% 13/12	% 12/11	% 11/10	% 10/09	% 09/08	% 14/01
ΔΕΚ	74,887	77,822	72,127	66,201	61,199	65,339	54,772	54,813	56,863	3.74	0.07	-16.17	6.76	-7.56	-8.22	-24.07

REVENUE (Euro)																
	2001	2002	2008	2009	2010	2011	2012	2013	2014	% 14/13	% 13/12	% 12/11	% 11/10	% 10/09	% 09/08	% 14/01
ΔΕΚ	49,891,162	60,826,211	51,600,000	42,700,000	40,900,000	41,600,000	41,590,000	37,600,000	43,700,000	16.22	-9.59	-0.02	1.71	-4.22	-17.25	-12.41

ΣΥΓΚΡΙΤΙΚΟΣ ΠΙΝΑΚΑΣ ΑΦΙΞΕΩΝ ΚΑΙ ΕΣΟΔΩΝ ΙΑΝ - ΔΕΚ 2001/2002/2008/2009/2010/2011/2012/2013/2014



ARRIVALS																
	2001	2002	2008	2009	2010	2011	2012	2013	2014	% 14/13	% 13/12	% 12/11	% 11/10	% 10/09	% 09/08	% 14/01
JAN-DEC	2,696,732	2,418,233	2,403,744	2,141,187	2,172,993	2,392,223	2,464,903	2,405,387	2,441,231	1.49	-2.41	3.04	10.09	1.49	-10.92	-9.47

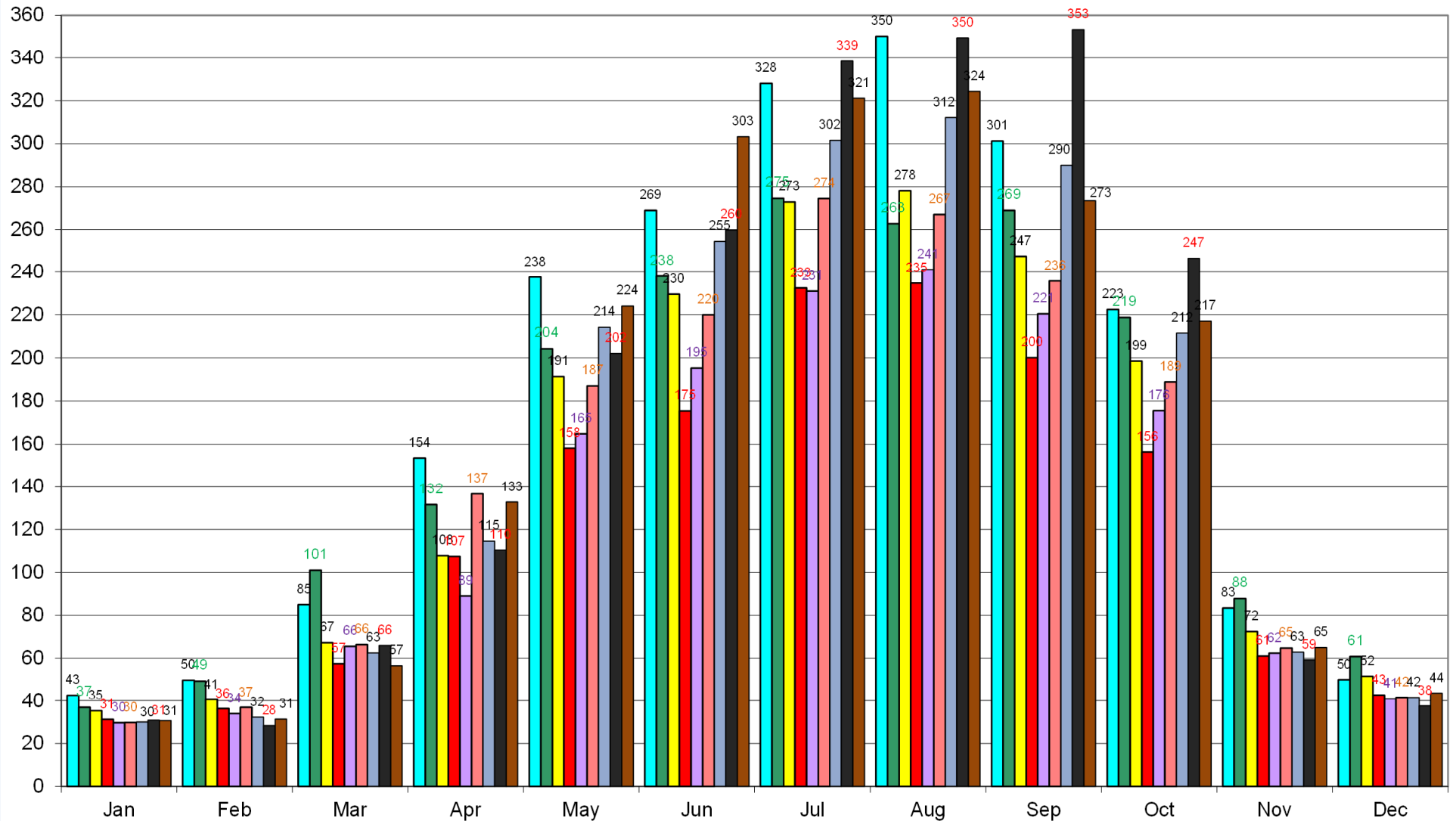
REVENUE (Euro)																
	2001	2002	2008	2009	2010	2011	2012	2013	2014	% 14/13	% 13/12	% 12/11	% 11/10	% 10/09	% 09/08	% 14/01
JAN-DEC	2,172,609,048	1,934,649,629	1,792,800,000	1,493,300,000	1,549,800,000	1,749,300,000	1,927,590,000	2,082,400,000	2,023,400,000	-2.83	8.03	10.19	12.87	3.78	-16.71	-6.87

ΕΣΟΔΑ ΑΠΟ ΤΟΥΡΙΣΜΟ

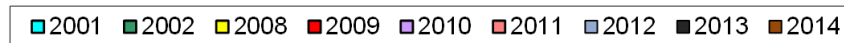
2001/2002/2008/2009/2010/2011/2012/2013/2014

RECEIPTS (€)

Millions



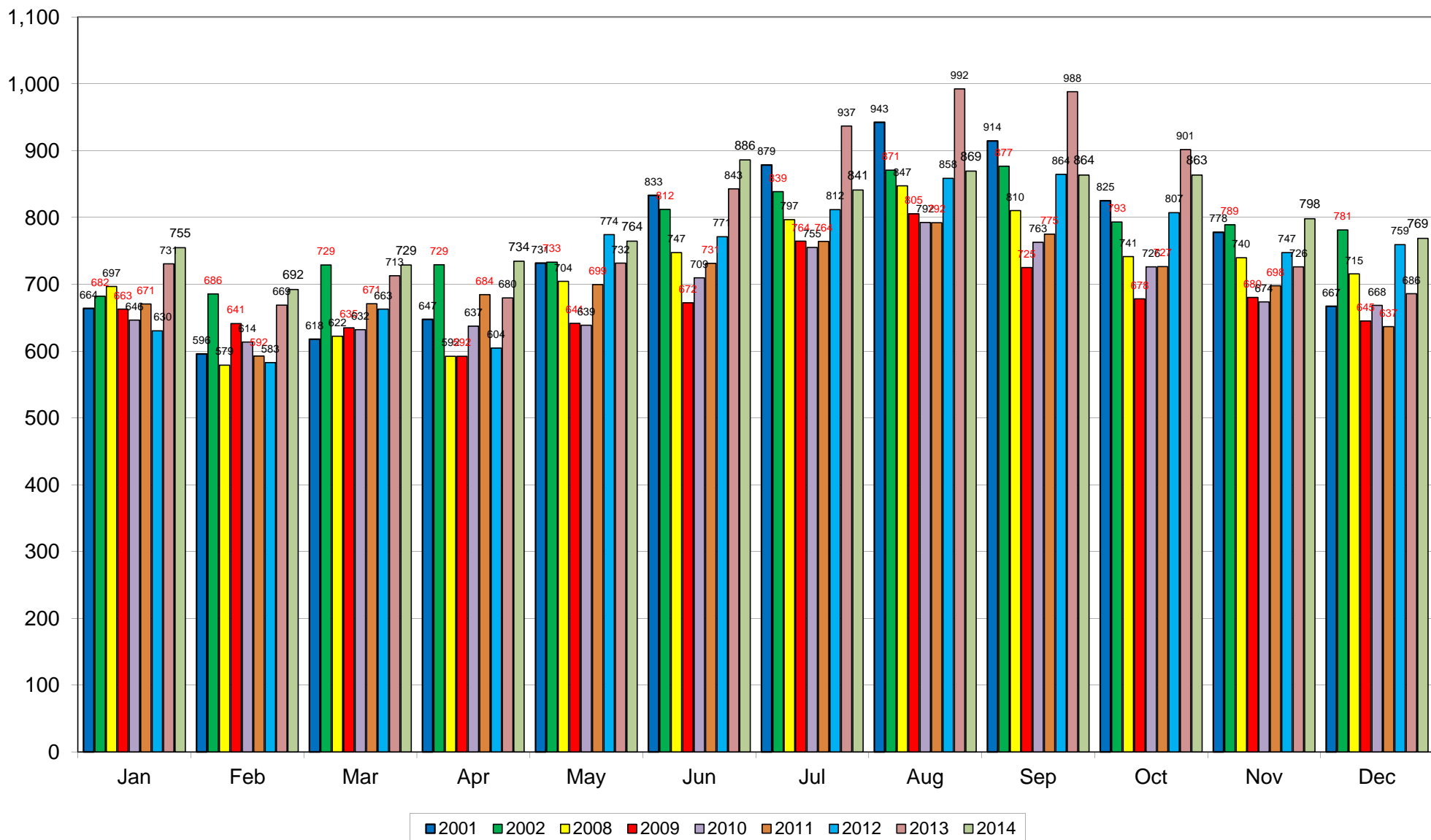
ΠΗΓΗ: Τμήμα Στατιστικής 2001-2015



ZI/ΣΠ
27/2/2015

ΚΑΤΑ ΚΕΦΑΛΗ ΔΑΠΑΝΗ / ΕΣΟΔΑ ΓΙΑ ΚΥΠΡΟ 2001/2002/2008/2009/2010/2011/2012/2013/2014

EURO (€)



ΠΗΓΗ: Τμήμα Στατιστικής & ΚΟΤ 2001-2015
ΖΙ/ΣΠ
27/2/2015